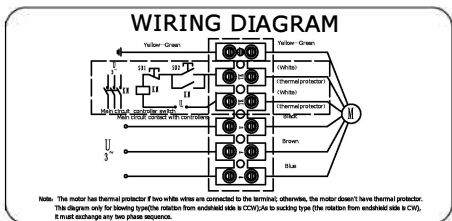


UNIT	Axial fan motor
MOTOR	Three phases motor
MOTOR TYPE	RW4-450 400V IMEVÄ
VOLTAGE (V)	400
FREQUENCY (Hz)	50
INPUT POWER (W)	250
CURRENT (A)	0.55
SPEED (r/min)	1350
AIR FLOW 20Pa (m³/h)	5080
NOISE (dBA)	69
CAPACITOR (µ F/450V)	-
ROTATION	CW ,looking into the end-shield
INSULATION CLASS	B
MOTOR PROTECTION	Thermocontact 135±5°C
TEMPERATURE RISE	75K max
PROTECTION CLASS	IP54
OPERATING TYPE	S1
AMBIENT TEMPERATURE	-30°C +60°C
BEARINGS	Ball bearings
MOUNTING TYPE	Horizontal or Vertical
ELECTRICAL CONNECTION	Lead wire Silikon 4G 0.50mm²+2G 0.30mm², Length 100mm in terminal box connected
APPROVALS	CE
NET WEIGHT/GROSS WEIGHT	8.0/9.0kg
PACKING	48.5*48.5*22cm

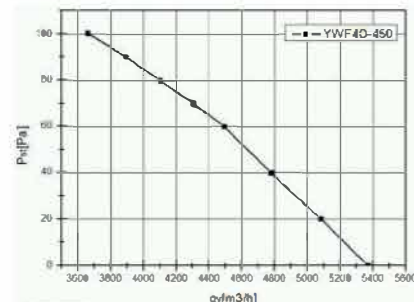
LABEL :

**REFPOWER** Axial Fan Motor  
 RW4-450 400V IMEVÄ  
 400V 50Hz 0.55A 180/250W 1350r/min  
 CL.B XX/XX

WIRING DIAGRAM:



FLOW RATE CURVE:



ErP2015 LABEL:

ErP2015 (N40)  
 N= 44.11 η<sub>statA</sub>= 34.4%  
 RW4-450 400V IMEVÄ

REV.	DESCRIPTION	APPROVED	DATE					SIGN	DATE	TITLE	PROJECTION	A4
								DRN. BY		<b>RW4-450 400V IMEVÄ</b>		SCALE
							CHD. BY		SHEET: of			
							ENG. BY					
							APP. BY					