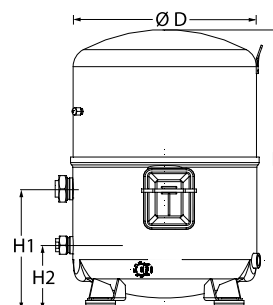


General Characteristics

Model number (on compressor nameplate)		NTZ215A4LR1B
Code number for Singlepack*		120F0240
Code number for Industrial pack**		120F0241
Drawing number		8504010f
Suction and discharge connections		Rotolock
Suction connection		1-3/4 " Rotolock
Discharge connection		1-1/4 " Rotolock
Suction connection with supplied sleeve		1-1/8 " ODF
Discharge connection with supplied sleeve		3/4 " ODF
Oil sight glass		Threaded
Oil equalisation connection		3/8" flare SAE
Oil drain connection		None
LP gauge port		Schrader
IPR valve		30 bar / 8 bar
Cylinders		4
Swept volume		215 cm ³ /rev
Displacement @ Nominal speed		37.4 m ³ /h @ 2900 rpm - 45.1 m ³ /h @ 3500 rpm
Net weight		62 kg
Oil charge		3.9 litre, POE - 175PZ
Maximum system test pressure Low Side / High side		25 bar(g) / 30 bar(g)
Maximum differential test pressure		30 bar
Maximum number of starts per hour		12
Refrigerant charge limit		10 kg
Approved refrigerants		R404A, R452A

Dimensions


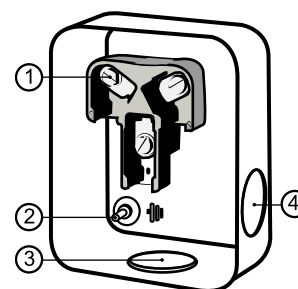
D=352 mm

H=519 mm

H1=233 mm

H2=125 mm

H3=- mm

Terminal box


IP54 (with cable gland)

1: Screw connectors 10-32 UNF x 9.5

2: Earth M4-12

3: Knock-out Ø 29 mm (1.14")

4: Knock-out Ø 25.5 mm (1.00")

Electrical Characteristics

Nominal voltage	380-400V/3/50Hz - 460V/3/60Hz
Voltage range	340-440 V @ 50Hz - 414-506 V @ 60Hz
Winding resistance (between phases) +/- 7% at 25°C	2.23 Ω
Maximum Continuous Current (MCC)	22.3 A
Locked Rotor Amps (LRA)	74 A
Motor protection	Internal overload protector

Recommended Installation torques

Oil sight glass	50 Nm
Power connections / Earth connection	3 Nm / 2 Nm
Mounting bolts	50 Nm

Parts shipped with compressor

Mounting kit with grommets, bolts, nuts, sleeves and washers
Suction & Discharge solder sleeves, rotolock nuts and gaskets (shipped with rotolock version only)
Initial oil charge
Installation instructions

Approvals : CE certified, -, -

*Singlepack: Compressor in cardboard box

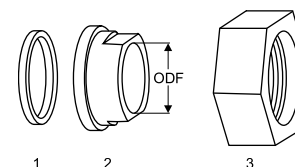
**Industrial pack: 6 Unboxed compressors on pallet (order per multiples of 6)

Rotolock accessories, suction side

Code no.

Solder sleeve, P02 (1-3/4" Rotolock, 1-1/8" ODF)	8153004
Angle adapter, C02 (1-3/4" Rotolock, 1-1/8" ODF)	8168005
Rotolock valve, V02 (1-3/4" Rotolock, 1-1/8" ODF)	8168028
Gasket, 1-3/4"	8156132

Gaskets, sleeves and nuts



- 1: Gasket
- 2: Solder sleeve
- 3: Rotolock nut

Rotolock accessories, discharge side

Code no.

Solder sleeve, P04 (1-1/4" Rotolock, 3/4" ODF)	8153008
Angle adapter, C04 (1-1/4" Rotolock, 3/4" ODF)	8168006
Rotolock valve, V04 (1-1/4" Rotolock, 3/4" ODF)	8168029
Gasket, 1-1/4"	8156131

Rotolock accessories, sets

Code no.

Angle adapter set, C02 (1-3/4"~1-1/8"), C04 (1-1/4"~3/4")	7703014
Valve set, V02 (1-3/4"~1-1/8"), V04 (1-1/4"~3/4")	7703009
Gasket set, 1", 1-1/4", 1-3/4", OSG gaskets black & white	8156009

Oil / lubricants

Code no.

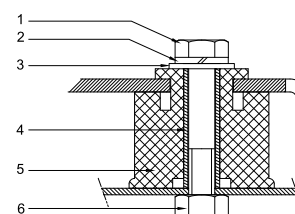
POE lubricant, 175PZ, 1 litre can	120Z0638
POE lubricant, 175PZ, 2.5 litre can	120Z0639

Crankcase heaters

Code no.

PTC heater 27W, CE mark, UL	120Z0459
Belt type crankcase heater, 75 W, 230 V, CE mark, UL	7773108
Belt type crankcase heater, 75 W, 400 V, CE mark, UL	7773118
Belt type crankcase heater, 75 W, 460 V, CE mark, UL	120Z0464

Mounting kit



- 1: Bolt (4x)
- 2: Lock washer (4x)
- 3: Flat washer (4x)
- 4: Sleeve (4x)
- 5: Grommet (4x)
- 6: Nut (4x)

Miscellaneous accessories

Code no.

Acoustic hood for 4 cylinder compressor	120Z0473
Oil equalisation nut	8153127

Spare parts

Code no.

Mounting kit for 4 cylinder compressor & MS, including 4 grommets, 4 bolts	8156007
Oil sight glass with gaskets (black & white)	8156019
Gasket for oil sight glass (black chloroprene)	8156145
Service kit for terminal box 96 x 115 mm, including 1 cover, 1 clamp	8156135
T block connector 52 x 57 mm	8173230

Performance data at 50 Hz, EN 12900 rating conditions, Suction temp. = 20 °C
R452A

Cond. temp. in °C (tc)	Evaporating temperature in °C (to)							
	-45	-40	-35	-30	-25	-20	-15	-10

Cooling capacity in W

30	-	-	5 961	8 014	10 501	13 470	16 969	21 044	-
35	-	-	5 375	7 293	9 613	12 383	15 649	19 460	-
40	-	-	4 776	6 555	8 703	11 268	14 296	17 836	-
45	-	-	-	5 806	7 776	10 131	12 916	16 180	-
50	-	-	-	-	6 838	8 977	11 513	14 496	-
55	-	-	-	-	-	7 812	10 094	12 790	-
60	-	-	-	-	-	-	-	-	-

Power input in W

30	-	-	3 839	4 433	5 029	5 639	6 275	6 950	-
35	-	-	3 931	4 588	5 240	5 900	6 580	7 292	-
40	-	-	3 979	4 709	5 429	6 149	6 883	7 642	-
45	-	-	-	4 786	5 583	6 374	7 173	7 991	-
50	-	-	-	-	5 692	6 565	7 439	8 326	-
55	-	-	-	-	-	6 711	7 671	8 638	-
60	-	-	-	-	-	-	-	-	-

Current consumption in A

30	-	-	7.11	7.85	8.62	9.42	10.24	11.06	-
35	-	-	7.25	8.07	8.93	9.82	10.73	11.64	-
40	-	-	7.30	8.21	9.16	10.15	11.15	12.17	-
45	-	-	-	8.29	9.34	10.43	11.54	12.66	-
50	-	-	-	-	9.47	10.66	11.88	13.12	-
55	-	-	-	-	-	10.87	12.21	13.56	-
60	-	-	-	-	-	-	-	-	-

Mass flow in kg/h

30	-	-	144	193	254	328	416	520	-
35	-	-	136	185	245	318	404	506	-
40	-	-	128	176	235	306	391	491	-
45	-	-	-	166	223	293	376	475	-
50	-	-	-	-	210	278	359	456	-
55	-	-	-	-	-	262	341	436	-
60	-	-	-	-	-	-	-	-	-

Coefficient of performance (C.O.P.)

30	-	-	1.55	1.81	2.09	2.39	2.70	3.03	-
35	-	-	1.37	1.59	1.83	2.10	2.38	2.67	-
40	-	-	1.20	1.39	1.60	1.83	2.08	2.33	-
45	-	-	-	1.21	1.39	1.59	1.80	2.02	-
50	-	-	-	-	1.20	1.37	1.55	1.74	-
55	-	-	-	-	-	1.16	1.32	1.48	-
60	-	-	-	-	-	-	-	-	-

Nominal performance at to = -35 °C, tc = 40 °C

Cooling capacity	4 776	W
Power input	3 979	W
Current consumption	7.30	A
Mass flow	128	kg/h
C.O.P.	1.20	

Pressure switch settings

Maximum HP switch setting	27.7	bar(g)
Minimum LP switch setting	0.1	bar(g)
LP pump down setting	0.1	bar(g)

Sound power data

Sound power level		dB(A)
With acoustic hood		dB(A)

to: Evaporating temperature at dew point

tc: Condensing temperature at dew point

Rating conditions : Suction gas temp. = 20 °C , Subcooling = 0 K

Tolerance according EN12900

Performance data at 50 Hz, EN 12900 rating conditions, Superheat = 10 K
R452A

Cond. temp. in °C (tc)	Evaporating temperature in °C (to)							
	-45	-40	-35	-30	-25	-20	-15	-10

Cooling capacity in W

30	-	3 884	5 455	7 421	9 838	12 764	16 255	20 369	-
35	-	3 380	4 835	6 653	8 890	11 604	14 853	18 696	-
40	-	2 878	4 212	5 877	7 928	10 423	13 424	16 989	-
45	-	-	3 594	5 098	6 957	9 229	11 975	15 256	-
50	-	-	-	4 325	5 986	8 027	10 511	13 501	-
55	-	-	-	3 562	5 019	6 824	9 039	11 729	-
60	-	-	-	-	-	-	-	-	-

Power input in W

30	-	3 234	3 839	4 433	5 029	5 639	6 275	6 950	-
35	-	3 257	3 931	4 588	5 240	5 900	6 580	7 292	-
40	-	3 224	3 979	4 709	5 429	6 149	6 883	7 642	-
45	-	-	3 971	4 786	5 583	6 374	7 173	7 991	-
50	-	-	-	4 806	5 692	6 565	7 439	8 326	-
55	-	-	-	4 760	5 745	6 711	7 671	8 638	-
60	-	-	-	-	-	-	-	-	-

Current consumption in A

30	-	6.43	7.11	7.85	8.62	9.42	10.24	11.06	-
35	-	6.49	7.25	8.07	8.93	9.82	10.73	11.64	-
40	-	6.46	7.30	8.21	9.16	10.15	11.15	12.17	-
45	-	-	7.29	8.29	9.34	10.43	11.54	12.66	-
50	-	-	-	8.31	9.47	10.66	11.88	13.12	-
55	-	-	-	8.29	9.56	10.87	12.21	13.56	-
60	-	-	-	-	-	-	-	-	-

Mass flow in kg/h

30	-	127	174	230	296	375	467	572	-
35	-	118	165	220	286	363	454	557	-
40	-	109	155	209	274	350	439	541	-
45	-	-	143	197	260	335	422	522	-
50	-	-	-	183	245	318	403	502	-
55	-	-	-	169	229	300	383	479	-
60	-	-	-	-	-	-	-	-	-

Coefficient of performance (C.O.P.)

30	-	1.20	1.42	1.67	1.96	2.26	2.59	2.93	-
35	-	1.04	1.23	1.45	1.70	1.97	2.26	2.56	-
40	-	0.89	1.06	1.25	1.46	1.70	1.95	2.22	-
45	-	-	0.91	1.07	1.25	1.45	1.67	1.91	-
50	-	-	-	0.90	1.05	1.22	1.41	1.62	-
55	-	-	-	0.75	0.87	1.02	1.18	1.36	-
60	-	-	-	-	-	-	-	-	-

Nominal performance at to = -35 °C, tc = 40 °C

Cooling capacity	4 212	W
Power input	3 979	W
Current consumption	7.30	A
Mass flow	155	kg/h
C.O.P.	1.06	

Pressure switch settings

Maximum HP switch setting	27.7	bar(g)
Minimum LP switch setting	0.1	bar(g)
LP pump down setting	0.1	bar(g)

Sound power data

Sound power level		dB(A)
With acoustic hood		dB(A)

to: Evaporating temperature at dew point

tc: Condensing temperature at dew point

Rating conditions : Superheat = 10 K , Subcooling = 0 K

Tolerance according EN12900

Performance data at 50 Hz, EN 12900 rating conditions, Suction temp. = 20 °C
R404A

Cond. temp. in °C (tc)	Evaporating temperature in °C (to)							
	-45	-40	-35	-30	-25	-20	-15	-10

Cooling capacity in W

30	-	4 519	6 254	8 335	10 797	13 675	17 003	20 817	-
35	-	-	5 636	7 623	9 967	12 702	15 864	19 485	-
40	-	-	4 948	6 828	9 039	11 618	14 598	18 014	-
45	-	-	-	5 966	8 031	10 439	13 224	16 420	-
50	-	-	-	-	6 959	9 181	11 757	14 720	-
55	-	-	-	-	-	7 862	10 214	12 929	-
60	-	-	-	-	-	6 497	8 612	11 065	-

Power input in W

30	-	3 426	4 096	4 730	5 307	5 800	6 188	6 447	-
35	-	-	4 154	4 895	5 597	6 237	6 790	7 234	-
40	-	-	4 149	4 990	5 811	6 590	7 303	7 926	-
45	-	-	-	5 009	5 944	6 856	7 722	8 518	-
50	-	-	-	-	5 991	7 030	8 043	9 006	-
55	-	-	-	-	-	7 107	8 260	9 384	-
60	-	-	-	-	-	7 083	8 370	9 648	-

Current consumption in A

30	-	6.66	7.43	8.23	9.11	10.12	11.29	12.66	-
35	-	-	7.50	8.40	9.34	10.36	11.52	12.84	-
40	-	-	7.52	8.55	9.59	10.67	11.85	13.15	-
45	-	-	-	8.66	9.82	11.00	12.23	13.56	-
50	-	-	-	-	10.00	11.31	12.63	14.01	-
55	-	-	-	-	-	11.55	13.01	14.48	-
60	-	-	-	-	-	11.68	13.31	14.91	-

Mass flow in kg/h

30	-	109	151	202	262	334	419	518	-
35	-	-	144	195	256	329	414	513	-
40	-	-	134	185	247	320	405	505	-
45	-	-	-	173	235	307	393	493	-
50	-	-	-	-	219	292	377	477	-
55	-	-	-	-	-	273	357	456	-
60	-	-	-	-	-	250	334	432	-

Coefficient of performance (C.O.P.)

30	-	1.32	1.53	1.76	2.03	2.36	2.75	3.23	-
35	-	-	1.36	1.56	1.78	2.04	2.34	2.69	-
40	-	-	1.19	1.37	1.56	1.76	2.00	2.27	-
45	-	-	-	1.19	1.35	1.52	1.71	1.93	-
50	-	-	-	-	1.16	1.31	1.46	1.63	-
55	-	-	-	-	-	1.11	1.24	1.38	-
60	-	-	-	-	-	0.92	1.03	1.15	-

Nominal performance at to = -35 °C, tc = 40 °C

Cooling capacity	4 948	W
Power input	4 149	W
Current consumption	7.52	A
Mass flow	134	kg/h
C.O.P.	1.19	



to: Evaporating temperature at dew point

tc: Condensing temperature at dew point

Rating conditions : Suction gas temp. = 20 °C , Subcooling = 0 K

Pressure switch settings

Maximum HP switch setting	27.7	bar(g)
Minimum LP switch setting	0.1	bar(g)
LP pump down setting	0.1	bar(g)

Sound power data

Sound power level	84.2	dB(A)
With acoustic hood	78.2	dB(A)

Tolerance according EN12900

Performance data at 50 Hz, EN 12900 rating conditions, Superheat = 10 K
R404A

Cond. temp. in °C (tc)	Evaporating temperature in °C (to)							
	-45	-40	-35	-30	-25	-20	-15	-10

Cooling capacity in W

30	2 714	4 019	5 641	7 623	10 008	12 842	16 169	20 033	-
35	2 217	3 454	4 985	6 853	9 101	11 776	14 925	18 592	-
40	1 701	2 854	4 277	6 014	8 110	10 610	13 563	17 016	-
45	1 186	2 238	3 538	5 128	7 054	9 363	12 103	15 325	-
50	-	1 627	2 787	4 215	5 954	8 054	10 564	13 537	-
55	-	-	2 047	3 295	4 831	6 703	8 964	11 669	-
60	-	-	1 342	2 391	3 704	5 330	7 322	9 737	-

Power input in W

30	2 744	3 426	4 096	4 730	5 307	5 800	6 188	6 447	-
35	2 651	3 398	4 154	4 895	5 597	6 237	6 790	7 234	-
40	2 506	3 314	4 149	4 990	5 811	6 590	7 303	7 926	-
45	2 306	3 167	4 076	5 009	5 944	6 856	7 722	8 518	-
50	-	2 954	3 929	4 950	5 991	7 030	8 043	9 006	-
55	-	-	3 705	4 806	5 948	7 107	8 260	9 384	-
60	-	-	3 398	4 574	5 810	7 083	8 370	9 648	-

Current consumption in A

30	5.89	6.66	7.43	8.23	9.11	10.12	11.29	12.66	-
35	5.66	6.60	7.50	8.40	9.34	10.36	11.52	12.84	-
40	5.30	6.45	7.52	8.55	9.59	10.67	11.85	13.15	-
45	4.78	6.18	7.45	8.66	9.82	11.00	12.23	13.56	-
50	-	5.73	7.25	8.66	10.00	11.31	12.63	14.01	-
55	-	-	6.87	8.52	10.07	11.55	13.01	14.48	-
60	-	-	6.27	8.20	9.99	11.68	13.31	14.91	-

Mass flow in kg/h

30	93	135	183	240	307	384	472	572	-
35	82	125	174	232	300	377	466	567	-
40	69	112	162	221	289	367	456	557	-
45	53	97	147	206	274	353	443	544	-
50	-	79	129	188	256	335	425	526	-
55	-	-	108	167	235	313	403	504	-
60	-	-	84	142	209	287	376	477	-

Coefficient of performance (C.O.P.)

30	0.99	1.17	1.38	1.61	1.89	2.21	2.61	3.11	-
35	0.84	1.02	1.20	1.40	1.63	1.89	2.20	2.57	-
40	0.68	0.86	1.03	1.21	1.40	1.61	1.86	2.15	-
45	0.51	0.71	0.87	1.02	1.19	1.37	1.57	1.80	-
50	-	0.55	0.71	0.85	0.99	1.15	1.31	1.50	-
55	-	-	0.55	0.69	0.81	0.94	1.09	1.24	-
60	-	-	0.39	0.52	0.64	0.75	0.87	1.01	-

Nominal performance at to = -35 °C, tc = 40 °C

Cooling capacity	4 277	W
Power input	4 149	W
Current consumption	7.52	A
Mass flow	162	kg/h
C.O.P.	1.03	

Pressure switch settings

Maximum HP switch setting	27.7	bar(g)
Minimum LP switch setting	0.1	bar(g)
LP pump down setting	0.1	bar(g)

Sound power data

Sound power level	84.2	dB(A)
With acoustic hood	78.2	dB(A)

to: Evaporating temperature at dew point

tc: Condensing temperature at dew point

Rating conditions : Superheat = 10 K , Subcooling = 0 K

Tolerance according EN12900

Performance data at 60 Hz, EN 12900 rating conditions, Suction temp. = 20 °C
R404A

Cond. temp. in °C (tc)	Evaporating temperature in °C (to)							
	-45	-40	-35	-30	-25	-20	-15	-10

Cooling capacity in W

30	-	5 332	7 379	9 835	12 741	16 137	20 064	24 564	-
35	-	-	6 650	8 995	11 761	14 989	18 719	22 993	-
40	-	-	5 839	8 057	10 667	13 709	17 226	21 257	-
45	-	-	-	7 040	9 477	12 318	15 604	19 376	-
50	-	-	-	-	8 211	10 834	13 873	17 369	-
55	-	-	-	-	-	9 277	12 052	15 256	-
60	-	-	-	-	-	7 667	10 162	13 056	-

Power input in W

30	-	4 042	4 833	5 582	6 262	6 845	7 302	7 607	-
35	-	-	4 902	5 776	6 604	7 359	8 012	8 537	-
40	-	-	4 896	5 888	6 857	7 776	8 617	9 353	-
45	-	-	-	5 911	7 014	8 090	9 112	10 052	-
50	-	-	-	-	7 070	8 295	9 490	10 627	-
55	-	-	-	-	-	8 387	9 747	11 073	-
60	-	-	-	-	-	8 358	9 877	11 385	-

Current consumption in A

30	-	6.66	7.43	8.23	9.11	10.12	11.29	12.66	-
35	-	-	7.50	8.40	9.34	10.36	11.52	12.84	-
40	-	-	7.52	8.55	9.59	10.67	11.85	13.15	-
45	-	-	-	8.66	9.82	11.00	12.23	13.56	-
50	-	-	-	-	10.00	11.31	12.63	14.01	-
55	-	-	-	-	-	11.55	13.01	14.48	-
60	-	-	-	-	-	11.68	13.31	14.91	-

Mass flow in kg/h

30	-	129	178	238	310	395	495	611	-
35	-	-	170	230	302	388	488	606	-
40	-	-	158	219	291	377	478	596	-
45	-	-	-	204	277	363	464	581	-
50	-	-	-	-	259	344	445	562	-
55	-	-	-	-	-	322	422	538	-
60	-	-	-	-	-	295	394	510	-

Coefficient of performance (C.O.P.)

30	-	1.32	1.53	1.76	2.03	2.36	2.75	3.23	-
35	-	-	1.36	1.56	1.78	2.04	2.34	2.69	-
40	-	-	1.19	1.37	1.56	1.76	2.00	2.27	-
45	-	-	-	1.19	1.35	1.52	1.71	1.93	-
50	-	-	-	-	1.16	1.31	1.46	1.63	-
55	-	-	-	-	-	1.11	1.24	1.38	-
60	-	-	-	-	-	0.92	1.03	1.15	-

Nominal performance at to = -35 °C, tc = 40 °C

Cooling capacity	5 839	W
Power input	4 896	W
Current consumption	7.52	A
Mass flow	158	kg/h
C.O.P.	1.19	

Pressure switch settings

Maximum HP switch setting	27.7	bar(g)
Minimum LP switch setting	0.1	bar(g)
LP pump down setting	0.1	bar(g)

Sound power data

Sound power level	87.9	dB(A)
With acoustic hood	81	dB(A)

to: Evaporating temperature at dew point

tc: Condensing temperature at dew point

Rating conditions : Suction gas temp. = 20 °C , Subcooling = 0 K

Tolerance according EN12900

Performance data at 60 Hz, EN 12900 rating conditions, Superheat = 10 K
R404A

Cond. temp. in °C (tc)	Evaporating temperature in °C (to)							
	-45	-40	-35	-30	-25	-20	-15	-10

Cooling capacity in W

30	3 202	4 743	6 657	8 995	11 809	15 153	19 079	23 639	-
35	2 616	4 076	5 883	8 086	10 739	13 896	17 611	21 938	-
40	2 007	3 367	5 047	7 097	9 570	12 520	16 004	20 079	-
45	1 399	2 640	4 174	6 051	8 324	11 048	14 282	18 084	-
50	-	1 920	3 289	4 973	7 026	9 504	12 466	15 973	-
55	-	-	2 416	3 888	5 700	7 910	10 578	13 769	-
60	-	-	1 583	2 822	4 371	6 290	8 640	11 490	-

Power input in W

30	3 238	4 042	4 833	5 582	6 262	6 845	7 302	7 607	-
35	3 128	4 010	4 902	5 776	6 604	7 359	8 012	8 537	-
40	2 958	3 910	4 896	5 888	6 857	7 776	8 617	9 353	-
45	2 722	3 737	4 810	5 911	7 014	8 090	9 112	10 052	-
50	-	3 485	4 637	5 841	7 070	8 295	9 490	10 627	-
55	-	-	4 372	5 671	7 019	8 387	9 747	11 073	-
60	-	-	4 010	5 397	6 855	8 358	9 877	11 385	-

Current consumption in A

30	5.89	6.66	7.43	8.23	9.11	10.12	11.29	12.66	-
35	5.66	6.60	7.50	8.40	9.34	10.36	11.52	12.84	-
40	5.30	6.45	7.52	8.55	9.59	10.67	11.85	13.15	-
45	4.78	6.18	7.45	8.66	9.82	11.00	12.23	13.56	-
50	-	5.73	7.25	8.66	10.00	11.31	12.63	14.01	-
55	-	-	6.87	8.52	10.07	11.55	13.01	14.48	-
60	-	-	6.27	8.20	9.99	11.68	13.31	14.91	-

Mass flow in kg/h

30	110	159	216	284	362	453	557	675	-
35	97	147	206	274	353	445	550	669	-
40	81	132	192	261	341	433	538	658	-
45	63	114	174	243	324	416	522	642	-
50	-	93	153	222	302	395	501	621	-
55	-	-	128	197	277	369	475	594	-
60	-	-	99	167	247	339	444	563	-

Coefficient of performance (C.O.P.)

30	0.99	1.17	1.38	1.61	1.89	2.21	2.61	3.11	-
35	0.84	1.02	1.20	1.40	1.63	1.89	2.20	2.57	-
40	0.68	0.86	1.03	1.21	1.40	1.61	1.86	2.15	-
45	0.51	0.71	0.87	1.02	1.19	1.37	1.57	1.80	-
50	-	0.55	0.71	0.85	0.99	1.15	1.31	1.50	-
55	-	-	0.55	0.69	0.81	0.94	1.09	1.24	-
60	-	-	0.39	0.52	0.64	0.75	0.87	1.01	-

Nominal performance at to = -35 °C, tc = 40 °C

Cooling capacity	5 047	W
Power input	4 896	W
Current consumption	7.52	A
Mass flow	192	kg/h
C.O.P.	1.03	

Pressure switch settings

Maximum HP switch setting	27.7	bar(g)
Minimum LP switch setting	0.1	bar(g)
LP pump down setting	0.1	bar(g)

Sound power data

Sound power level	87.9	dB(A)
With acoustic hood	81	dB(A)

to: Evaporating temperature at dew point

tc: Condensing temperature at dew point

Rating conditions : Superheat = 10 K , Subcooling = 0 K

Tolerance according EN12900