

EN 12900 LBP 220V, 50Hz, CSIR/RSIR, fan cooling F₂

Evap. temp. in °C	-45	-40	-35	-30	-25	-23.3	-20	-15	-10	-6.7	-5	0	5	7.2	10	15	20
Capacity in W			175	225	284	306	352	432	527	599	639	769	921	995			
Power cons. in W			154	170	188	194	206	223	241	252	257	272	286	292			
Current cons. in A			1.09	1.13	1.18	1.2	1.24	1.30	1.36	1.40	1.42	1.47	1.52	1.54			
COP in W/W			1.14	1.32	1.51	1.57	1.71	1.93	2.19	2.38	2.48	2.82	3.22	3.41			

EN 12900 MBP 220V, 50Hz, CSIR/RSIR, fan cooling F₂

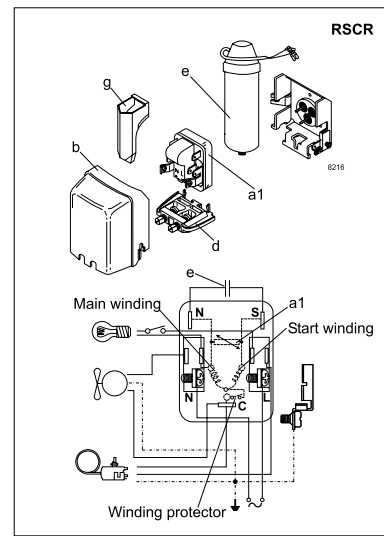
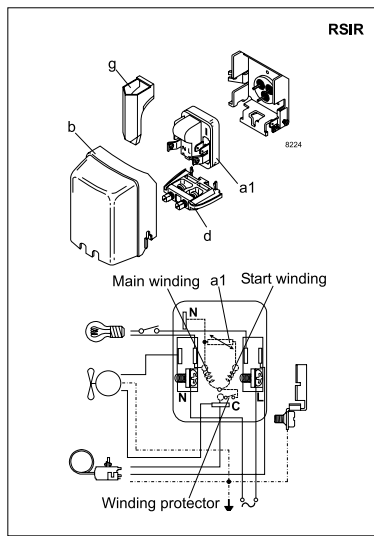
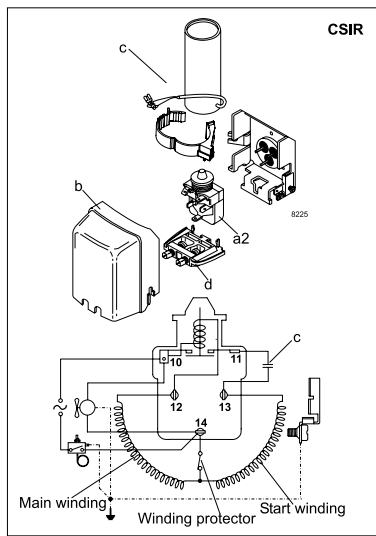
Evap. temp. in °C	-45	-40	-35	-30	-25	-23.3	-20	-15	-10	-6.7	-5	0	5	7.2	10	15	20
Capacity in W			161	211	266	287	330	405	493	559	596	716	856	925			
Power cons. in W			158	176	196	203	216	236	256	268	274	292	309	315			
Current cons. in A			1.10	1.15	1.21	1.23	1.27	1.34	1.41	1.46	1.48	1.55	1.61	1.63			
COP in W/W			1.02	1.19	1.36	1.41	1.53	1.72	1.93	2.08	2.17	2.45	2.77	2.93			

ASHRAE LBP 220V, 50Hz, CSIR/RSIR, fan cooling F₂

Evap. temp. in °C	-45	-40	-35	-30	-25	-23.3	-20	-15	-10	-6.7	-5	0	5	7.2	10	15	20
Capacity in W			168	228	292	315	363	446	541	612	652	782	934	1009			
Power cons. in W			151	174	198	206	222	246	270	285	293	315	336	344			
Current cons. in A			1.10	1.17	1.25	1.27	1.33	1.42	1.52	1.58	1.61	1.70	1.80	1.83			
COP in W/W			1.11	1.31	1.48	1.53	1.64	1.81	2.01	2.15	2.23	2.48	2.78	2.93			

ASHRAE MBP/HBP 220V, 50Hz, CSIR/RSIR, fan cooling F₂

Evap. temp. in °C	-45	-40	-35	-30	-25	-23.3	-20	-15	-10	-6.7	-5	0	5	7.2	10	15	20
Capacity in W			150	203	261	282	325	398	482	546	581	696	831	897			
Power cons. in W			150	172	196	204	219	243	267	282	289	311	332	340			
Current cons. in A			1.10	1.17	1.25	1.27	1.33	1.42	1.52	1.58	1.61	1.70	1.80	1.83			
COP in W/W			1.01	1.18	1.33	1.38	1.48	1.63	1.81	1.94	2.01	2.24	2.51	2.64			



Accessories for	DLE6.5CN	Figure	Code number
PTC starting device	6.3 mm spade connectors	a1	-
	4.8 mm spade connectors		-
ePTC starting device	4.8 mm spade connectors		103N0050
Starting relay	6.3 mm spade connectors	a2	117U7016
Start. capacitor 80 µF	6.3 mm spade connectors	c	117U5015
Cover		b	103N0491
Run capacitor 5 µF (optional)	6.3 mm spade connectors	e	-
	4.8 mm spade connectors		117-7129
Cord relief		d	103N1010
Protection screen for PTC		g	-

Test conditions	EN 12900		ASHRAE	
	LBP	MBP	LBP	MBP
Condensing temperature	40°C	45°C	54.4°C	54.4°C
Ambient temperature	32°C	32°C	32.2°C	35°C
Suction gas temperature	20°C	20°C	32.2°C	35°C
Liquid temperature	no subcooling		32.2°C	46.1°C

Mounting accessories		Code number
Bolt joint for one comp.	Ø: 16 mm	118-1917
Bolt joint in quantities	Ø: 16 mm	118-1918
Snap-on in quantities	Ø: 16 mm	118-1919

Danfoss can accept no responsibility for possible errors in catalogues, brochures and other printed material. Danfoss reserves the right to alter its products without notice. This also applies to products already on order provided that such alterations can be made without subsequent changes being necessary in specifications already agreed. All trademarks in this material are property of the respective companies. Danfoss and the Danfoss logotype are trademarks of Danfoss A/S. All rights reserved.