



Compressor
Voltage Code : FZ

AE4450P-FZ1A

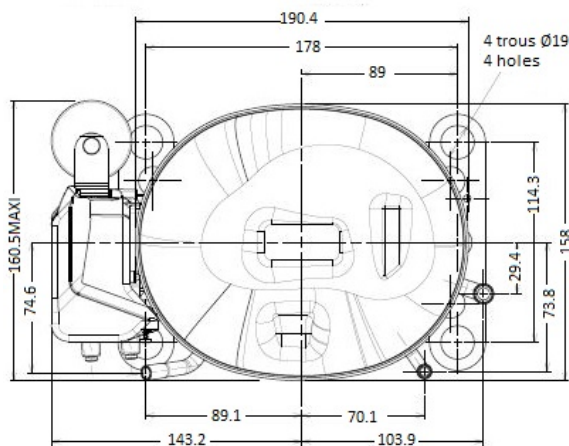
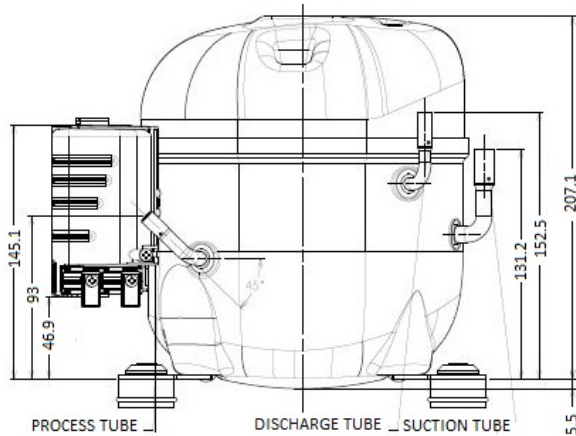
High Temp. Commercial (HP)

220 - 240V 1~ 50 Hz

R455A / R454C

AE4450P-FZ1A

| Conditions | Frequency | Nominal Cooling Capacity | | Sound Power ISO3745 / ISO 3743-1 |
|-----------------|-----------|--------------------------|-------|-------------------------------------|
| | | Watts | BTU/h | |
| CECOMAF / R455A | 50 Hz | 1119 | 3815 | 57 dBA |
| CECOMAF / R454C | 50 Hz | 1037 | 3537 | 57 dBA |



* CECOMAF : T°Cond. 55.0°C / T°Evap. 5.0°C / T°Return gas temp.. 32.0°C
T°Subcooling. 0.0K

| | |
|-------------------------------------|---------------------------------|
| Displacement (cc) | 8,85 |
| Net Weight (Kg) | 10.7 |
| Oil Quantity (cc) | 380.0 |
| Oil Type | Polyolester |
| Expansion Device | Capillary_Tube or Expansion_Val |
| Cooling | Fan |
| Main Winding (Ohm) | 5.7 |
| Start Winding (Ohm) | 25.4 |
| Current | |
| RLA (A) | 3,2 |
| MCC (A) | 4,6 |
| LRA (A) | 17.5 |
| Electrical Equipment | CSIR |
| Overload | MRA58217 |
| Time Check | 6.5s - 16s / 12 A |
| Open Temp | 135° C |
| Close Temp | 52° C |
| Start Capacitor | 72 µF / 250 V |
| Current Relay | 9660C-***-160 |
| Pick Up | 9,40A |
| Drop Out | 7,90A |
| Refrigerating connection for | |
| Suction Tube | 9.5 (3/8") |
| Discharge Tube | 6.35 (1/4") |
| Process Tube | 6.35 (1/4") |

Note : Tecumseh reserves the right to change information contained in this document without notification.



Tecumseh

| | |
|---------------------|---|
| AE4450P-FZ1A | Tension FZ : 220 - 240V 1~ 50 Hz |
|---------------------|---|

| | | |
|--|------------------------|---------|
| Les performances sont données dans les conditions CECOMAF : | Gaz aspirés : | 32.0 °C |
| Condition Mid | Sous refroidissement : | 0.0 K |
| The performance data are in CECOMAF conditions : | Return gas : | 32.0 °C |
| Mid Condition | Subcooling : | 0.0 K |

| 50 Hz R455A | | | | | | | | | | | |
|--------------------|--------------------|--------|-----|------|------|------|------|------|------|------|---------------|
| | | | | | | | | | | | N°3223 |
| 4 T condensation | 5 T évaporation | (°C) | -25 | -20 | -15 | -10 | -5 | 0 | 5 | 10 | 15 |
| 30 | 1 P frigorifique | (Watt) | | 632 | 787 | 973 | 1193 | 1451 | 1748 | 2088 | 2474 |
| | 2 P absorbée | (W) | | 320 | 343 | 365 | 385 | 402 | 413 | 418 | 414 |
| | 3 I absorbée | (A) | | 2.54 | 2.60 | 2.65 | 2.70 | 2.73 | 2.75 | 2.76 | 2.75 |
| 40 | 1 P frigorifique | (Watt) | | | 672 | 833 | 1022 | 1243 | 1498 | 1790 | 2121 |
| | 2 P absorbée | (W) | | | 381 | 410 | 437 | 461 | 482 | 496 | 504 |
| | 3 I absorbée | (A) | | | 2.66 | 2.75 | 2.83 | 2.91 | 2.98 | 3.04 | 3.09 |
| 50 | 1 P frigorifique | (Watt) | | | | 683 | 844 | 1030 | 1244 | 1490 | 1770 |
| | 2 P absorbée | (W) | | | | 441 | 479 | 515 | 547 | 575 | 597 |
| | 3 I absorbée | (A) | | | | 2.83 | 2.95 | 3.08 | 3.20 | 3.32 | 3.43 |
| 60 | 1 P frigorifique | (Watt) | | | | | 666 | 820 | 995 | 1197 | 1428 |
| | 2 P absorbée | (W) | | | | | 505 | 555 | 603 | 648 | 687 |
| | 3 I absorbée | (A) | | | | | 3.04 | 3.21 | 3.38 | 3.56 | 3.73 |

| 50 Hz R454C | | | | | | | | | | | |
|--------------------|--------------------|--------|-----|------|------|------|------|------|------|------|---------------|
| | | | | | | | | | | | N°3217 |
| 4 T condensation | 5 T évaporation | (°C) | -25 | -20 | -15 | -10 | -5 | 0 | 5 | 10 | 15 |
| 30 | 1 P frigorifique | (Watt) | | 558 | 701 | 874 | 1078 | 1316 | 1590 | 1902 | 2256 |
| | 2 P absorbée | (W) | | 303 | 324 | 343 | 361 | 375 | 385 | 389 | 386 |
| | 3 I absorbée | (A) | | 2.49 | 2.54 | 2.58 | 2.63 | 2.67 | 2.70 | 2.70 | 2.69 |
| 40 | 1 P frigorifique | (Watt) | | | 597 | 748 | 926 | 1133 | 1372 | 1645 | 1954 |
| | 2 P absorbée | (W) | | | 349 | 376 | 402 | 425 | 444 | 459 | 468 |
| | 3 I absorbée | (A) | | | 2.58 | 2.65 | 2.73 | 2.80 | 2.87 | 2.92 | 2.95 |
| 50 | 1 P frigorifique | (Watt) | | | | 618 | 770 | 946 | 1149 | 1381 | 1645 |
| | 2 P absorbée | (W) | | | | 404 | 438 | 471 | 502 | 528 | 549 |
| | 3 I absorbée | (A) | | | | 2.72 | 2.83 | 2.94 | 3.05 | 3.15 | 3.23 |
| 60 | 1 P frigorifique | (Watt) | | | | | 615 | 760 | 927 | 1119 | 1338 |
| | 2 P absorbée | (W) | | | | | 468 | 512 | 554 | 592 | 627 |
| | 3 I absorbée | (A) | | | | | 2.92 | 3.07 | 3.22 | 3.37 | 3.51 |

1 = cooling capacity 2 = power input 3 = current 4 = condensing temperature 5 = evaporating temperature

Nota : Tecumseh se réserve le droit de modifier les informations contenues dans ce document sans préavis.

Note : Tecumseh reserves the right to change information contained in this document without notification.

© 2021 Tecumseh Products Company
All rights reserved